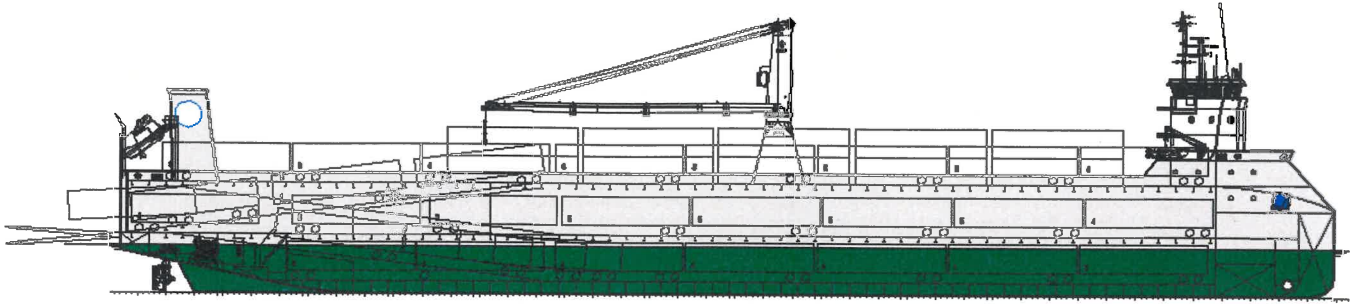


5450 DWAT Multi-Purpose Ro-Ro Vessel



Main particulars

Length over all	127.60	m.
Length b.p.p.	122.80	m.
Breadth mld.	15.90	m.
Depth to upper deck	11.60	m.
Design draught	5.00	m.
Dead weight	abt. 5,450	mtons
Trail speed	17	knots

Propulsion

Main engine:	4x
Podded propulsion:	2x steerable thrusters

Deckcrane

The ship will be equipped with one deck crane. 35 ton – 30 m / 55 ton – 21m / 80 ton – 14 m

General cargo capacities

Trailer capacity	abt. 94	trailers
Containers on Deck	60	TEU
Tanktop area	abt. 1090	m ² .
Tweendeck area	abt. 1180	m ² .
Upperdeck area	abt. 1280	m ² .

Navigation equipment

Communication equipment acc. to GMDSS area A3

Tank capacities

HFO	abt. 300	m ³ .
Potable water	abt. 80	m ³ .
Ballast water	abt. 3500	m ³ .

Accommodation

Each crew member has a single berth cabin. Complete accommodation with ventilation, heating and air-conditioning.

Classification

Lloyd's Register of Shipping